

New Woodland High School

Woodland Public Schools



Aerial view 04.07.2014

Construction Management Report

April 2015

New Woodland High School
1500 Dike Access Road

Project Status

Construction Progress:

Site

- Curb and parking area paving is complete.
- Sidewalks are underway.
- Baseball and softball fencing is underway.
- Football field synthetic turf is complete.
- Robinson Road improvements are complete.
- Dike access Road improvements are underway.
- Landscaping is underway. Irrigation is mostly complete.
- Perimeter fencing is underway

Building

- North Classroom Wing
 - This wing is mostly complete and the architect has done a preliminary punch list.
 - Carpet installation will begin next month.
- South classroom Wing
 - This wing is mostly complete and the architect has done a preliminary punch list.
 - Carpet installation will begin next month.
- Commons/Central Area
 - Painting is complete.
 - Rough Plumbing is complete.
 - HVAC duct work is mostly complete.
 - Fire sprinkler piping is complete.
 - Rough electrical is underway.
 - Kitchen/Servery equipment installation underway.
- Gyms/Locker Rooms
 - Exterior trim/siding is complete
 - Painting is underway.
 - Gym wood floors are underway.
 - Casework and trim is underway.
 - HVAC units and duct work are complete.



- Rough electrical is complete.
- Grandstand
 - Plumbing and electrical are complete.
 - CMU base is ready for steel superstructure
 - Steel structure is being installed.

Schedule:

- The project’s date of Substantial Completion is July, 17 2015.
- Time expended: 506 days, 85%
- The project is on schedule. Current schedule summary below:

EXEC-1015	Owner Notice to Proceed	0	20-Nov-13 A	
EXEC-1020	Total Project Duration (Calendar Days)	547	02-Dec-13 A	09-Jul-15
EXEC-1030	Start Construction	0	02-Dec-13 A	
EXEC-1055	Sitework/Earthwork/Utilities	385	02-Dec-13 A	19-May-15
EXEC-1057	Material & Equipment Procurement	92	31-Dec-13 A	26-Jun-14 A
EXEC-1060	High School Superstructure	125	13-Jan-14 A	14-Aug-14 A
EXEC-1140	Gymnasium Superstructure & Enclosure	189	30-Jan-14 A	20-Oct-14
EXEC-1065	High School Building Enclosure	158	12-May-14 A	12-Dec-14
EXEC-1145	Athletic Fields & Buildings	228	29-May-14 A	01-Jul-15
EXEC-1070	1st Level North Classroom Wing Buildout	160	03-Jun-14 A	20-Feb-15
EXEC-1075	2nd Level North Classroom Wing Buildout	160	09-Jun-14 A	28-Jan-15
EXEC-1090	2nd Level South Classroom Wing Buildout	160	02-Jul-14 A	03-Mar-15
EXEC-1080	1st Level South Classroom Wing Buildout	160	03-Jul-14 A	13-Mar-15
EXEC-1100	Commons Area Buildout	160	28-Aug-14 A	16-Apr-15
EXEC-1110	Music & Choir Room Buildout	166	12-Sep-14	07-May-15
EXEC-1120	Culinary Arts Lab Buildout	171	26-Sep-14	29-May-15
EXEC-1130	Kitchen & Servery Buildout	181	10-Oct-14	26-Jun-15
EXEC-1150	Gymnasium, Locker Rooms & Fitness Buildout	175	21-Oct-14	29-Jun-15
EXEC-1160	Project Commissioning & Closeout	195	02-Dec-14	04-Sep-15
EXEC-1165	Substantial Completion	0		09-Jul-15
EXEC-1170	Final Completion	0		07-Sep-15*

Financial Review:

Construction Contract Amount:	\$43,538,000	
<u>Change Orders to-date:</u>	<u>\$1,626,111</u>	<u>3.7%</u>
Total Contract amount:	\$ \$45,164,111	
Total Billed/Completed to-date:	\$39,204,988	87%
Pending Change Orders:	\$58,489	CO 24

Potential Change Order Tracking:

- Open CCD(s) T&M and approved COR's: \$80,117
- Open Change Order Requests: \$70,593

Projected Contingency Balance: \$351,361

Claim Issues

- Unit Cost/Allowance Adjustment
No change - The contractor has submitted Change Order Request #106 for a bid error on the unit costs and allowances. They are asking to have the allowance adjusted based on lower unit costs. Adjustment should be (\$221,201) and they have asked for (\$113,883) for a new difference of \$107,318. District has previously informed the GC that they will reject this COR.
- Geogrid/Footing Conflict
No Change - Contractor has been paid for the additional costs. The architect has been notified of impending claim. School district consulting with district's attorney.

Photos:

Additional photos available via web camera access: www.dwpwebcams.com/whs/desktop.htm



View from main vehicle entry



Main Entry and Administration



Gym Entry



Ticket Booth and sidewalk to Stadium



Grandstands and new synthetic turf field



Football field and school beyond



Back of Grandstands (concessions and restrooms)



Softball field



Spectator areas at baseball and softball fields



Shot put and discus areas



Student Entry on north side



Shop entry



Courtyard



Courtyard



Vehicle entry form Robinson Road



South Classroom Wing



South Wing Concourse



South Shared Activity Area



Typical Science Classroom



Typical Classroom



Science Prep Room



Library



Library



Computer Lab in Library



Upper Main Concourse



Student Store



Musical Instrument lockers



Upper Main Concourse



Commons with Stage



Commons



Stage



Music Room



Servery/Kitchen



Kitchen



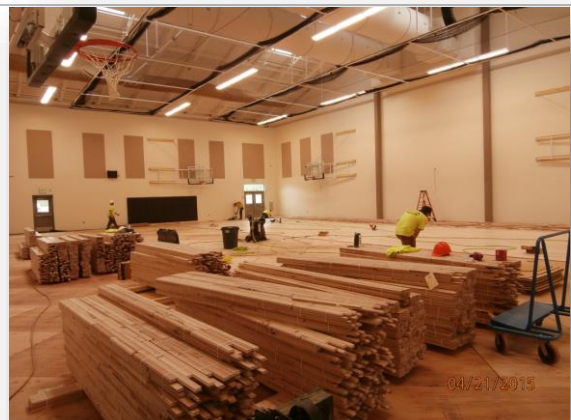
Culinary Arts



Main Gymnasium



Locker Rooms



Auxiliary Gymnasium



Locker Room



Trophy Cases at Gym Lobby



Gym Lobby



Wrestling Room



Typical Restrooms



Typical Mechanical Room



Typical Sub-Electrical Room



Greenhouse



Dike Access Road Improvements



Dike Access Road Improvements